



## Mushrooms and Moles Susan Saltzgeber Designs

When we stitch we are like mushrooms and moles -  
our best work is done while we are "hidden away".

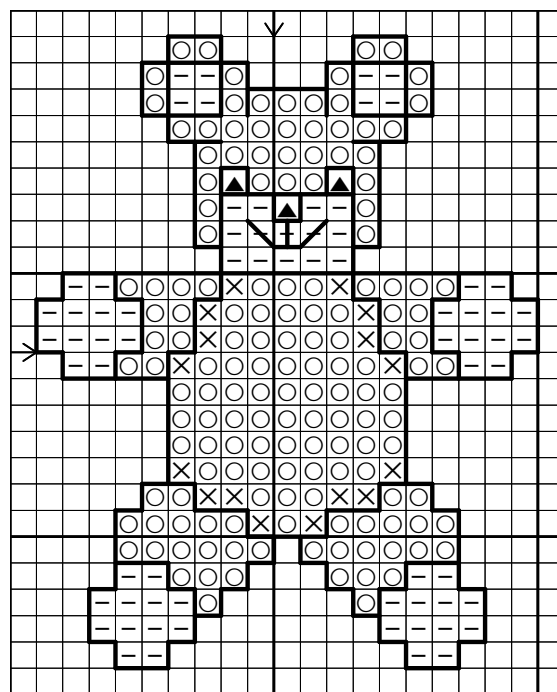
If not currently available,  
ask your local needlework shop to carry  
*Susan Saltzgeber Designs.*

There are a great variety of designs that  
may be purchased from the web site  
with no minimum order requirements -  
including afghan squares  
with pillow making instructions included,  
month designs which can be used as  
quilt squares,  
instructions to make a 'month' quilt,  
the "Snow Family" series,  
the "Kidlin - Then and Now" series,  
the "Wee Treasures" series,  
and many other designs of various sizes.

Available as of July 31, 2005 -  
"It's a Boy!" and "It's A Girl!"

Coming soon -  
"Autumn Glory" and "Whee-e-e"

Check the web site regularly as more  
designs are always being created.



This free chart is available  
with compliments of  
*Susan Saltzgeber Designs.*

Please see a collection  
of additional beautiful designs  
for your stitching pleasure at  
[www.CrossStitcheryShop.com](http://www.CrossStitcheryShop.com)

# TEDDY BEAR

© 2005 Susan Saltzgeber Designs

19 stitches wide X 24 stitches high  
14 Count, 1 1/4" wide X 1 5/8" high  
11 Count, 1 3/4" wide X 2 1/8" high

Model stitched by Susan C. Saltzgeber  
using Jobelan 28 count  
Antique White (429-101)  
from Wichelt Imports, Inc.  
and  
DMC embroidery floss.

**DMC Rayon Floss Used for Cross-stitches:  
2 strands**

Symbol	Number	Color
X	434	Brown-LT
O	436	Tan
-	738	Tan-VY LT
▲	801	Coffee Brown-DK

**DMC Rayon Floss Used for Backstitches:  
1 strand**

Number	Color	Where Used
898	Coffee Brown-DK	Teddy Bear

One copy of this design may be made for  
your own use. This chart may not be used  
for profit in any way, in a kit, or to sell.